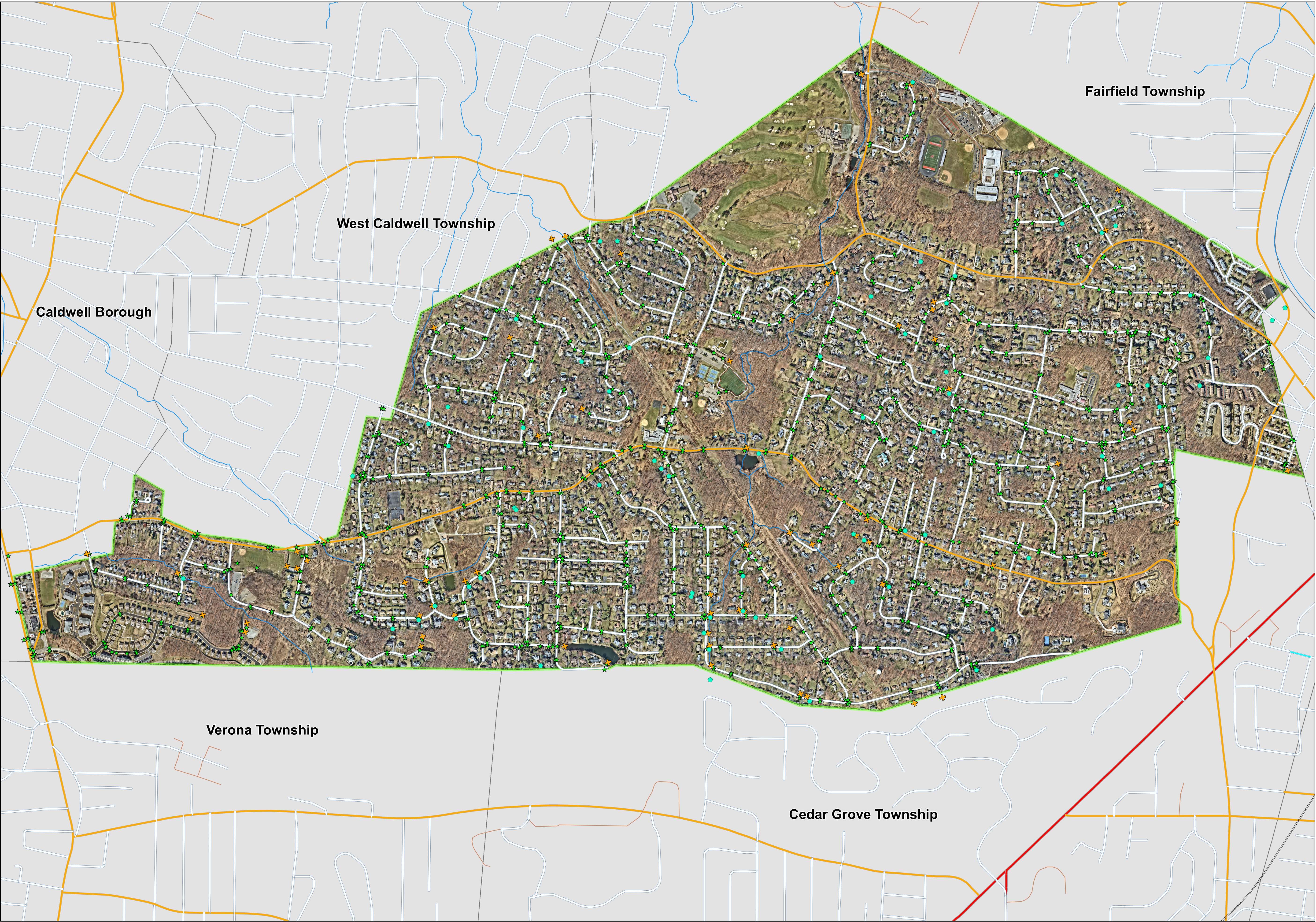
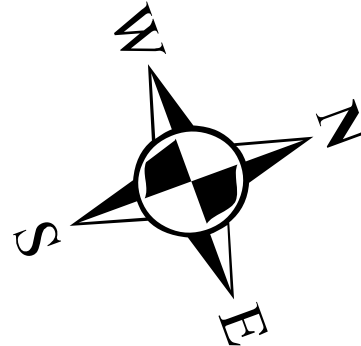


2022 Stormwater Infrastructure Map

Borough of North Caldwell
Essex County
New Jersey



Legend

OUTFALL

- OUTFALL

INLET

- INLET/CATCH BASIN

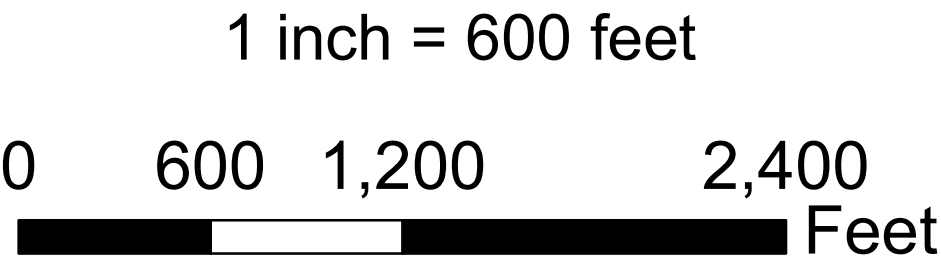
Roads and Waterways

- Interstate Highway
- US & State Highway
- County Route
- Local Road
- Access & Service Roads
- Railroads
- Streams & Rivers

Boundaries

- North Caldwell Borough
- Other Municipalities

Coordinate System: NAD 1983 2011 StatePlane New Jersey FIPS 2900 Ft US
Projection: Transverse Mercator
Datum: NAD83 National Spatial Reference System 2011
Units: Foot US
Map Date: July 2022



Disclaimer:
The location of all Open Channel Headwalls are approximate and not field verified.
Plotting of the headwall structures was based upon the Stormwater Drainage Systems Master Plan, dated November 1990, provided by The Borough of North Caldwell. Locations of all headwalls may vary.